



100 Longwater Avenue

GreenPark

992—14,400 SQ FT



GreenPark



100 LONGWATER AVENUE

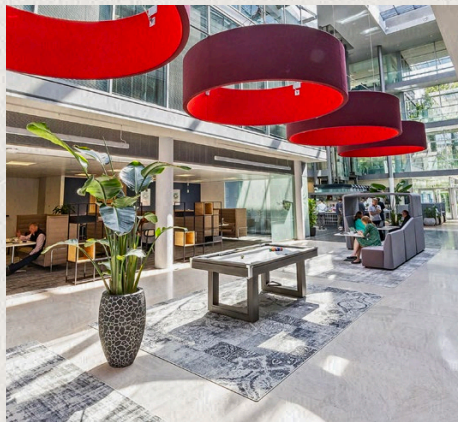
A striking Foster + Partners designed building set in a prominent position on Green Park at the edge of Longwater Lake. The building offers high quality office space with a range of on-site amenities.

This welcoming waterside building houses our Business Centre with world-class conference facilities. It has a fully-staffed reception and on-site security, Byte Café, and showers for the cyclists on your team.

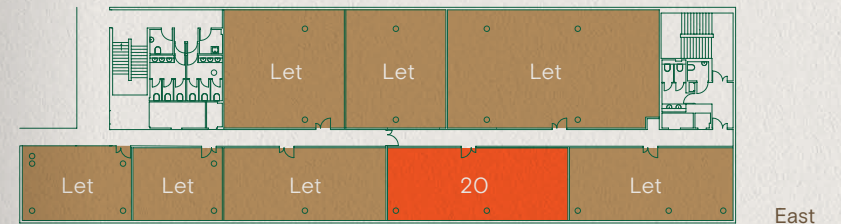


Specifications

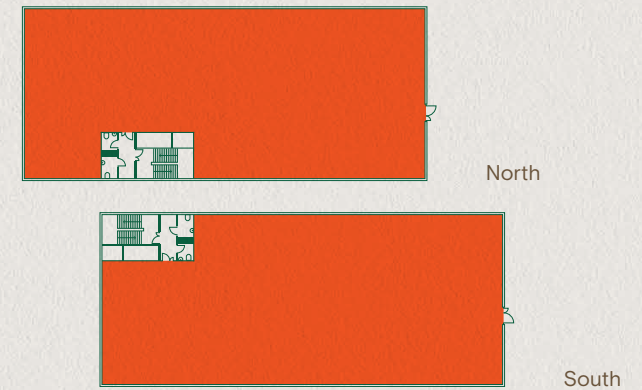
- Four pipe fan coil air conditioning
- Fully accessible raised floors (150mm void)
- Showers and bike racks
- Fully-staffed reception
- Meeting and conference facilities at the Green Park Conference Centre
- The Hive business lounge
- On-site Byte Café
- Wi-Fi enabled atrium
- 24 hour security on the Park
- EPC – E (110)



THIRD FLOOR



SECOND FLOOR



Schedule of availability	Parking spaces	sq ft	sq m
3 rd , East, Suite 20*	4	992	92
2 nd , South*	29	6,698	622
2 nd , North	29	6,710	624
Total	58	14,400	1,338

* denotes fitted accommodation.



100 LONGWATER AVENUE



100 Longwater Avenue
Conference Centre
Marketing Suite
BYTE CAFÉ

100 Brook Drive
PERK CAFÉ

Reading Gate
Retail Park

itsu M
COSTA COFFEE KFC

Lime Square Amenity Hub
Green Park Day Nursery
Street Food Markets
WOLF Olive Tree Dental
Nuffield Health Optimal Align Green Park

Green Park wind turbine
providing power to over
1,000 homes

Tennis Court / Multipurpose
Sports Court

GREEN PARK



GreenPark

[Greenpark.co.uk](https://www.greenpark.co.uk)



Charles Dady
+44 (0)7793 808 273

James Goodwin
+44 (0)7717 652 803

Cameron Lineen
+44 (0)7827 661 335



Jake Booth
+44 (0)7714 388 044

Rob Marson
+44 (0)7778 467 781

Lewis Holmes
+44 (0)7767 204 895

These brief particulars have been prepared as agents for our clients and are intended as a convenient guide to supplement an inspection or survey. Their accuracy is not guaranteed. They contain statements of opinion and in some instances we have relied on information provided by others. You should verify the particulars on your visit to the property and the particulars do not obviate the need for a full survey and all the appropriate enquiries. Accordingly, there shall be no liability as a result of any error or omission in the particulars or any other information given.

October 2024. Reference 2407013.