



Arbor

ARBOR. 300 SOUTH OAK WAY

150,000 SQ FT / 14,000 SQ M
SUSTAINABLE GRADE-A WORKSPACE



GreenPark



ARBOR. 300 SOUTH OAK WAY

150,000 sq ft / 14,000 sq m

Architects Sheppard Robson have been busy reimagining the potential of Arbor which is currently an amazing blank canvas.

Our designs for retrofitting the building to the highest quality specification and finish are currently at a concept stage, so can be adapted to suit the specific requirements of any business.



ARBOR, 300 SOUTH OAK WAY

Space & light.

The full height atrium creates an impressive entrance, demonstrating our ambition for Arbor to be best-in-class in every possible aspect.

The ground floor cafe and auditorium will draw users up into the central atrium of the building.



Balconies and stairs create informal social spaces. Natural materials alongside biophilic elements create a calming environment for the business lounge and breakout spaces.

ARBOR, 300 SOUTH OAK WAY

Natural lines & natural materials.



BUSINESS LOUNGE



		
Prominent location next to the Green Park turbine	Next to multi-sport court and near Lime Square amenity hub	Large Auditorium/ town hall space
		
Circa 150,000 sq ft net internal area	Typical floors of 35,500 sq ft	Potential 4 way tenancy split per floor
		
129 secure cycle parking	Shower and changing facilities	563 car parking spaces (10-20% EV charging) 1:263 sq ft
		
Improved full height atrium and reception	Multiple winter gardens and terraces	Onsite café
		
Increase sustainability through enhanced building envelope and services	All electric building targeting EPC 'A'	BREEAM Outstanding (Targeting)

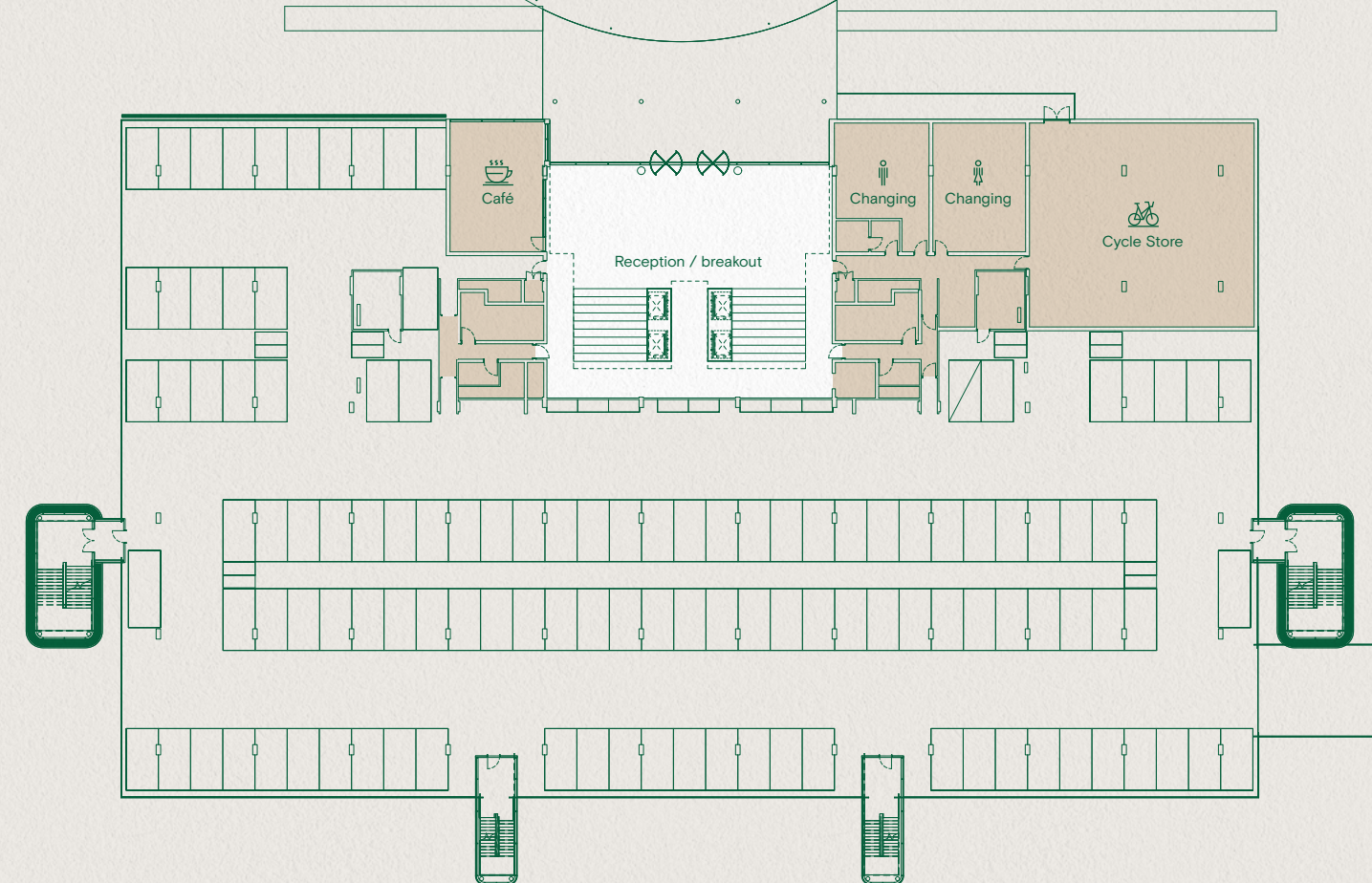


ACCOMMODATION

IPMS3

Floor	Workspace		Winter Gardens/Terrace	
	sq ft	sq m	sq ft	sq m
4th floor	35,037	3,255	1,969	183
3rd floor	35,596	3,307	1,969	183
2nd floor	35,596	3,307	635	59
1st floor	37,264	3,462	635	59
Reception	4,790	445		
Total	148,283	13,776	5,208	484

563 parking spaces

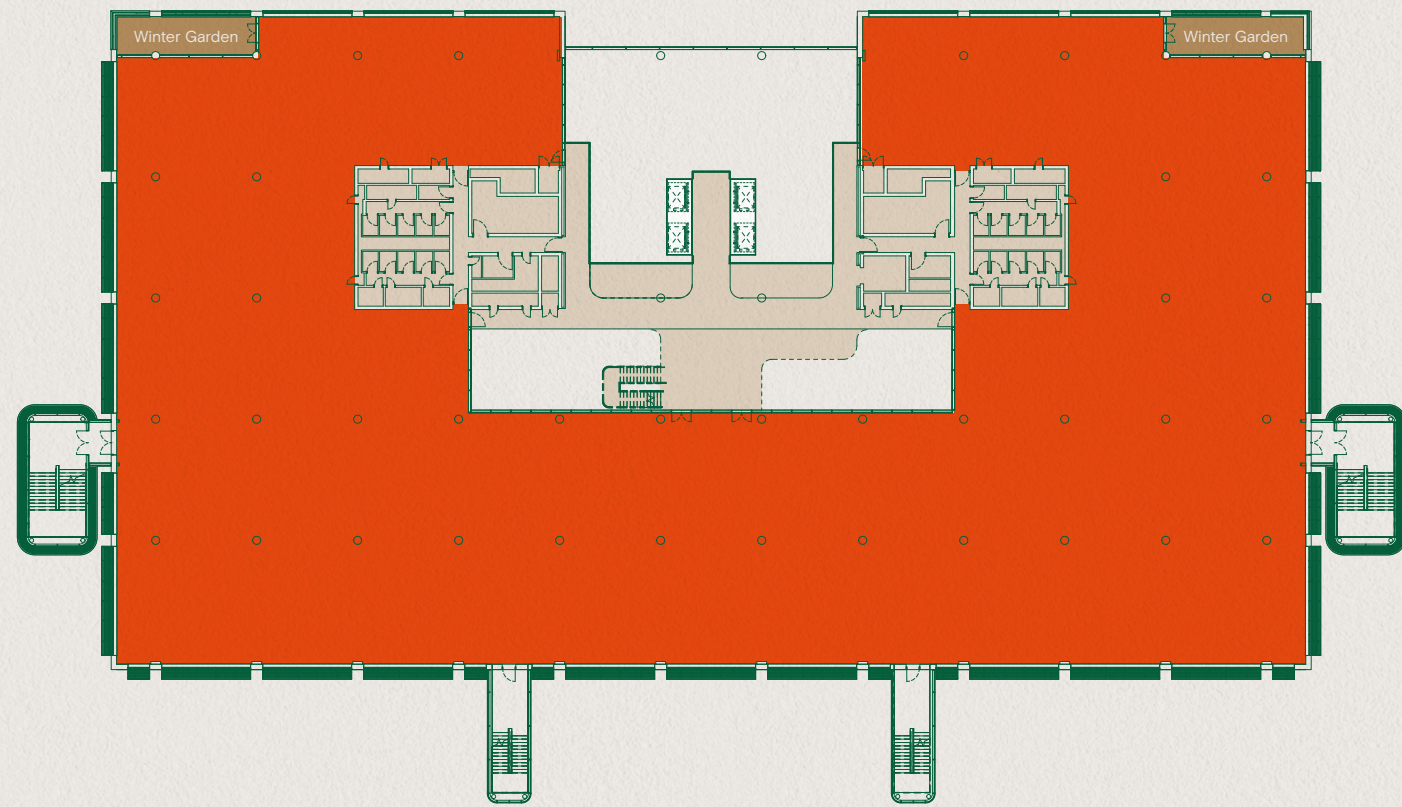


Plan not to scale. For indicative purposes only.



FIRST FLOOR

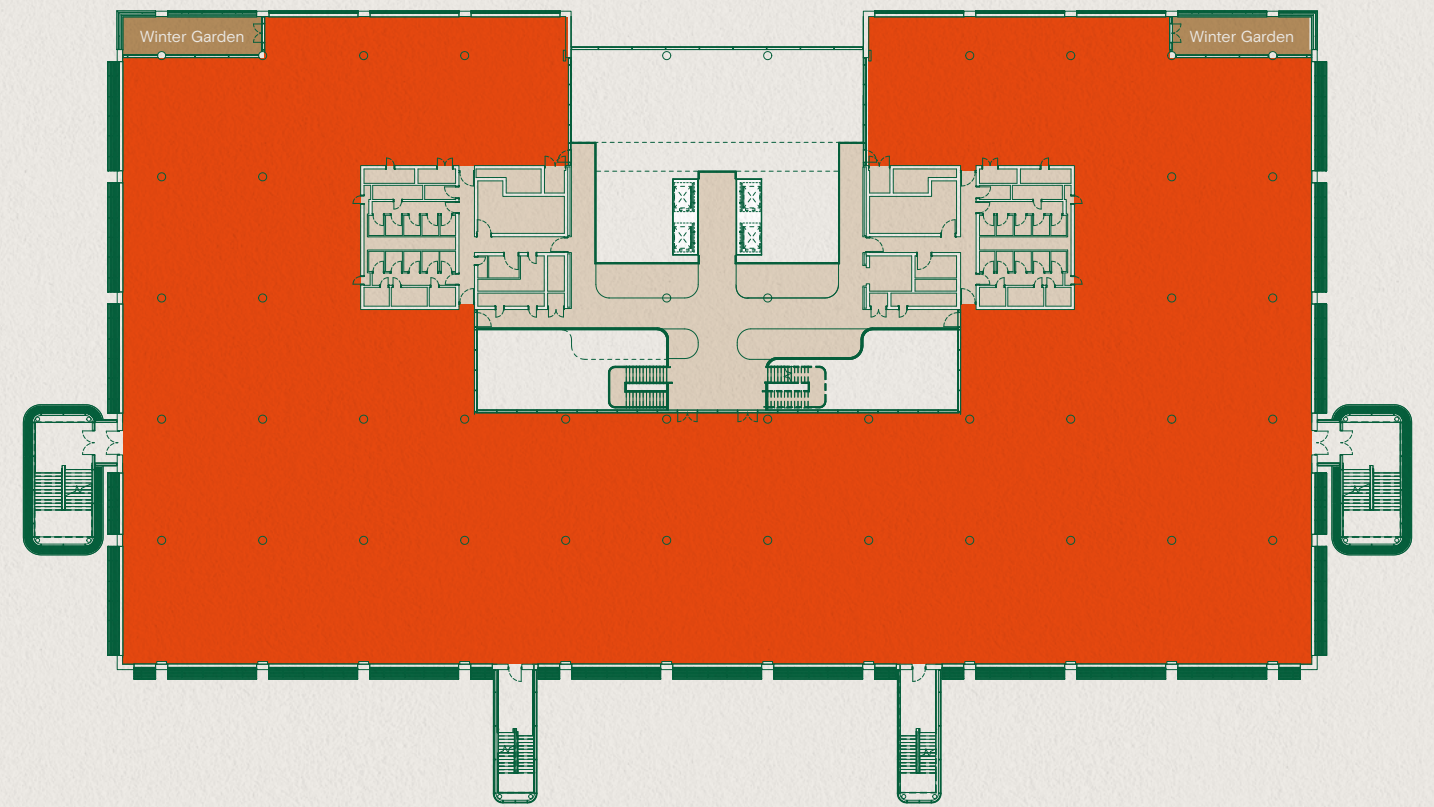
WORK SPACE 37,264 SQ FT / 3,462 SQ M
WINTER GARDENS 635 SQ FT / 59 SQ M



Plan not to scale. For indicative purposes only.

SECOND FLOOR

WORK SPACE 35,596 SQ FT / 3,307 SQ M
WINTER GARDENS 635 SQ FT / 59 SQ M



Plan not to scale. For indicative purposes only.

ARBOR, 300 SOUTH OAK WAY

FLOOR PLANS



ARBOR, 300 SOUTH OAK WAY

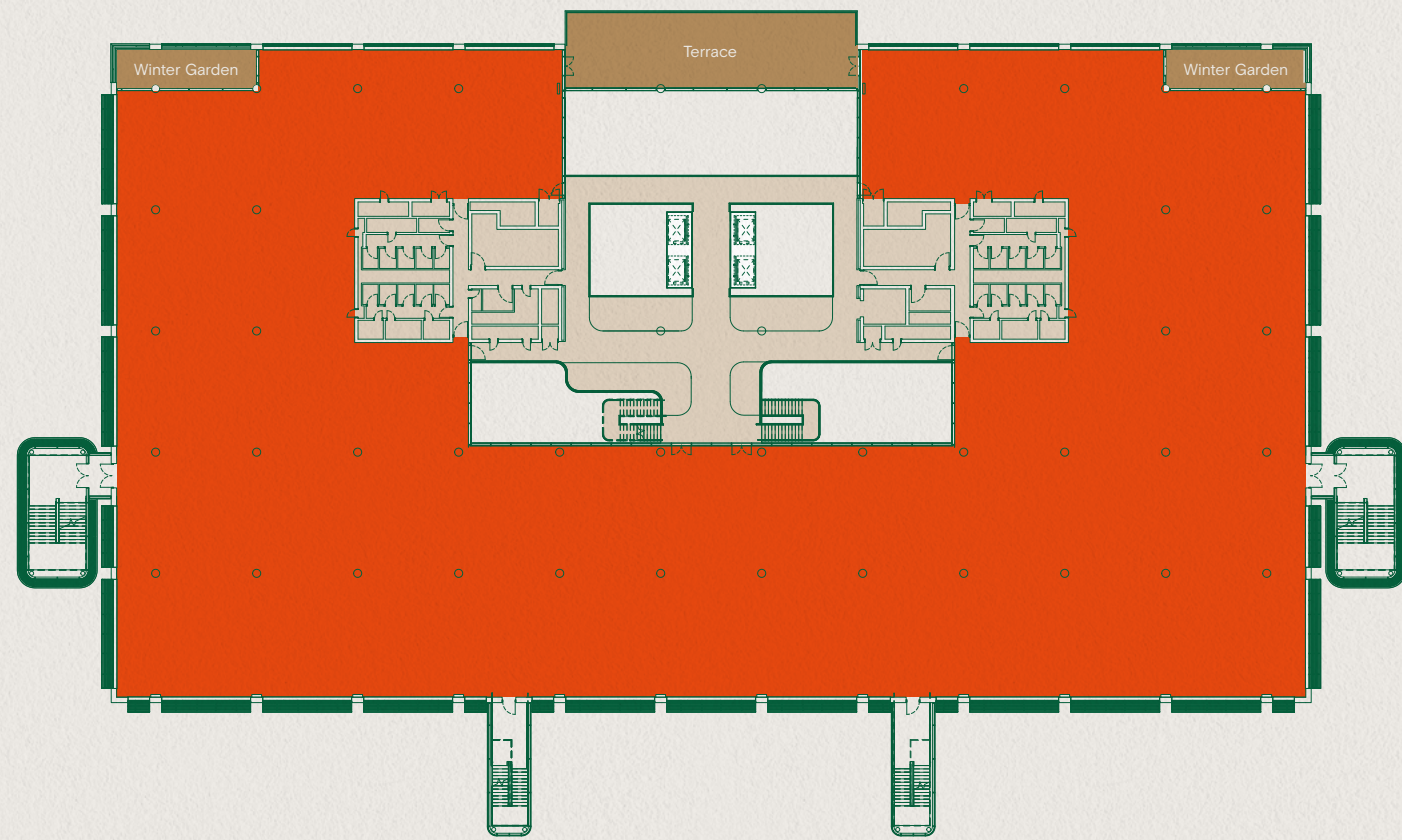


WORKSPACE



THIRD FLOOR

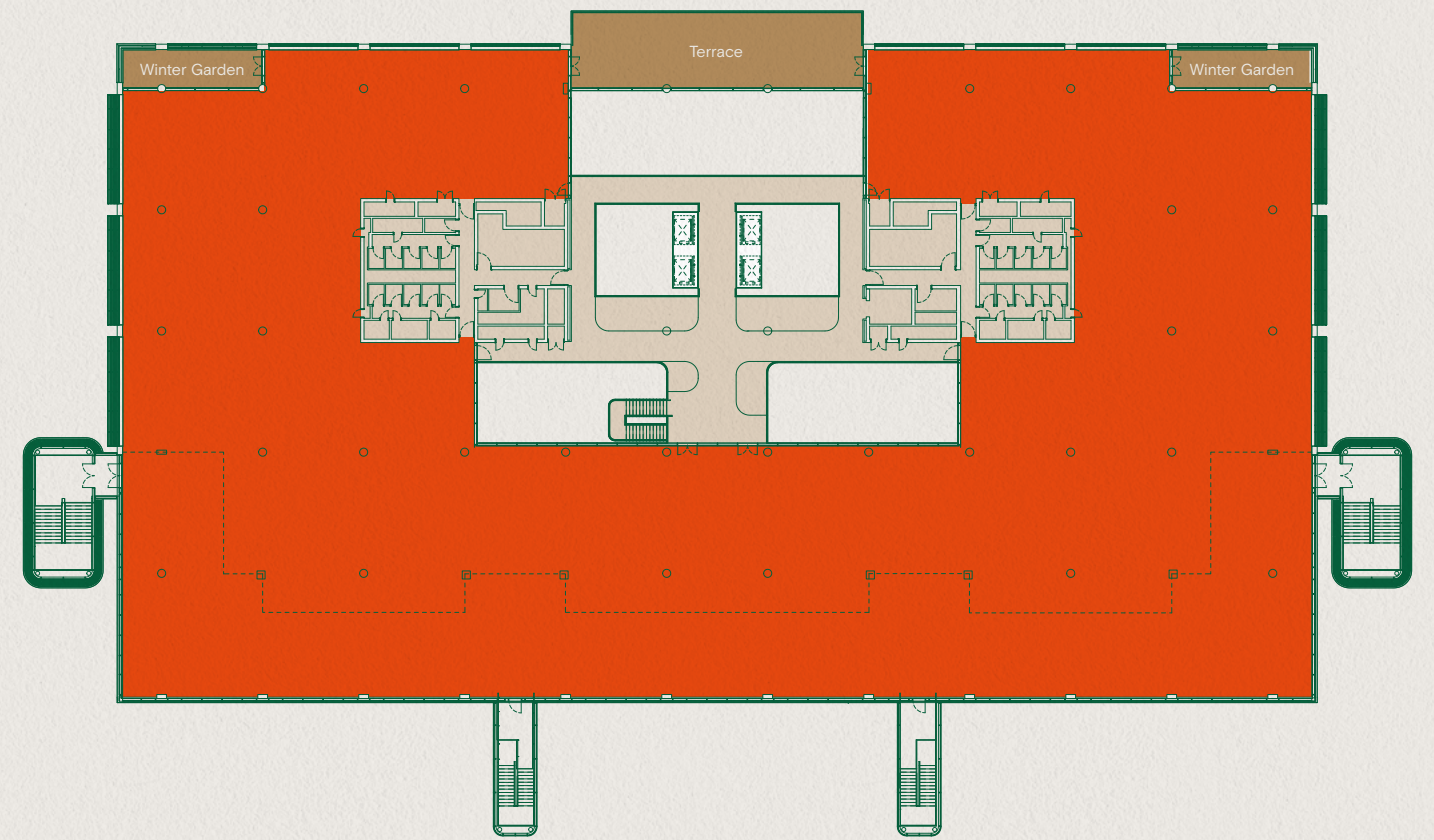
WORK SPACE 35,596 SQ FT / 3,307 SQ M
WINTER GARDEN & TERRACE 1,969 SQ FT / 183 SQ M



Plan not to scale. For indicative purposes only.

FOURTH FLOOR

WORK SPACE 35,037 SQ FT / 3,255 SQ M
WINTER GARDEN & TERRACE 1,969 SQ FT / 183 SQ M



Plan not to scale. For indicative purposes only.

ARBOR, 300 SOUTH OAK WAY

FLOOR PLANS



Outward looking spaces.

Multiple winter gardens and large terraces across all of the upper floors create spaces that change the pace and tone in the workspace allowing people to reset and focus.



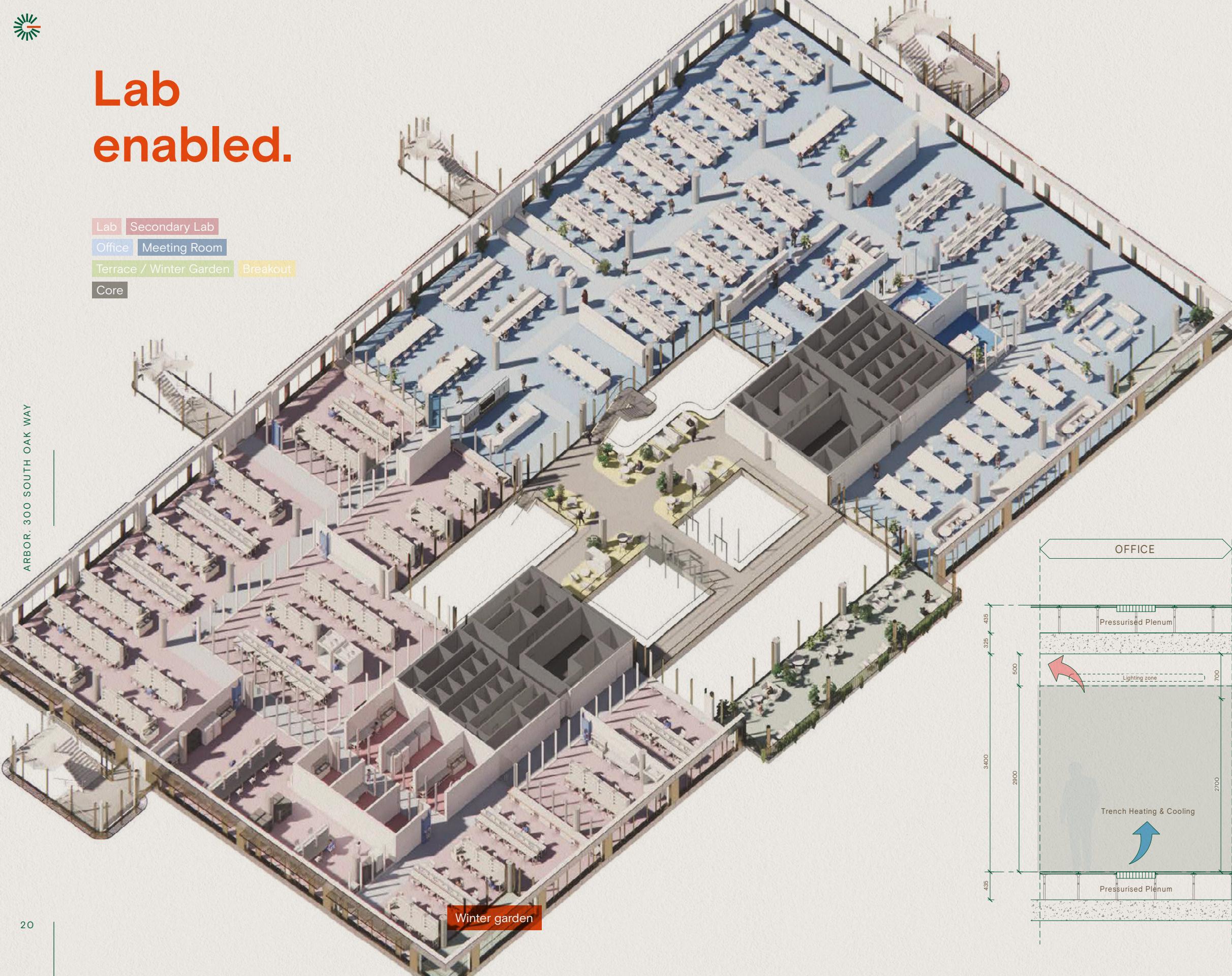
WINTER GARDENS

19



Lab enabled.

- Lab Secondary Lab
- Office Meeting Room
- Terrace / Winter Garden Breakout
- Core



ARBOR, 300 SOUTH OAK WAY

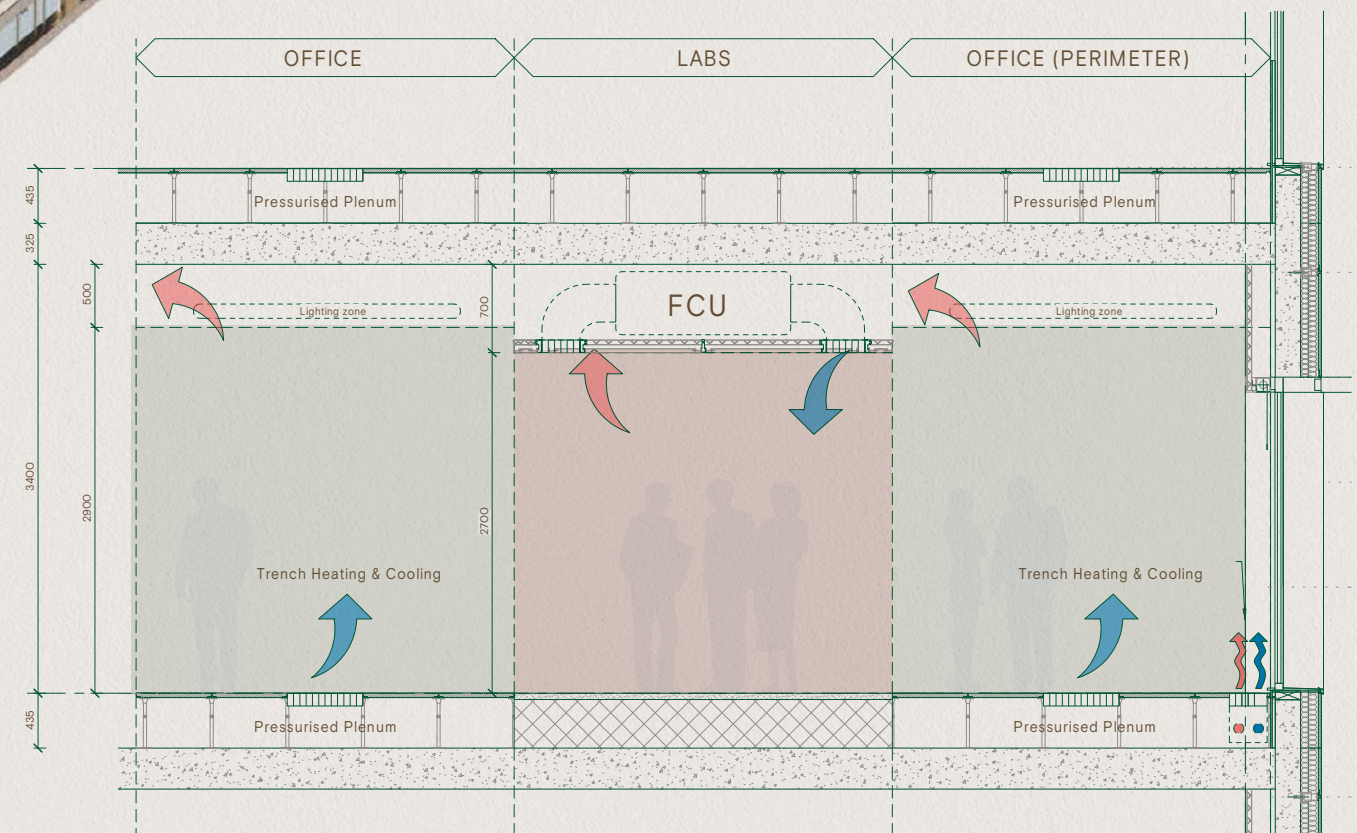
Winter garden

The robust base build has the flexibility to be adapted to a lab use if required by occupiers.

The floor levels are set to allow a generous raised access floor however should a laboratory space within the floor plate be required, the raised access floor and service floor void can be replaced with localised solid floor areas made from void former and screed or foamed concrete to provide the low vibration performance required for common lab uses. Where this type of base is not required the floor can be sealed to make it impervious to spills and chemicals.

Additional air handling units can be located on the roof and this air can be ducted to the laboratory areas from the cores. Additional fan coil units or VAV units and a suspended ceiling will then be installed to provide fresh air and heating and cooling to the lab spaces.

Riser space allocation suggests that a maximum lab-office split of 50/50* will be possible



LAB ENABLED



100 Longwater Avenue
 Conference Centre
 The Hive
 Marketing Suite
BYTE CAFÉ

100 Brook Drive
CAFÉ PERK

Reading Gate Retail Park

itsu 
COSTA **KFC**
 COFFEE

Lime Square Amenity Hub
 Green Park Day Nursery
 Street Food Markets

WOLF 
Nuffield Health 

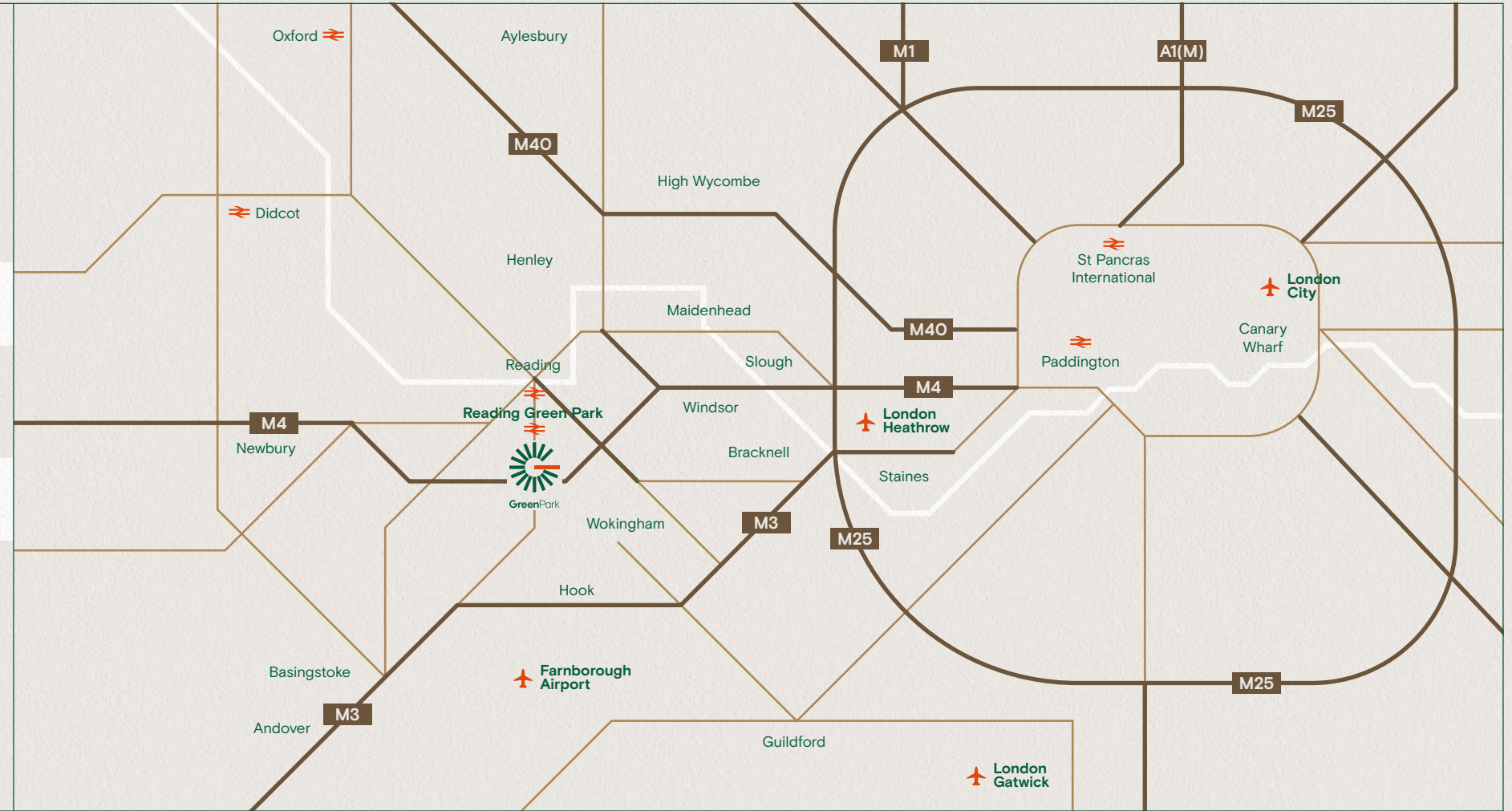
Tennis Court / Multi-Sport Court



Green Park to Reading 7 minutes

Reading to Paddington 23 minutes

Reading Green Park train station opened in May 2023. The station connects the park directly to Reading Station (national rail network and the Elizabeth Line) with up to four trains an hour and a journey time of approximately seven minutes.



Reading station to...

Paddington
23 minutes

Slough
19 minutes

Maidenhead
12 minutes

Green Park is located close to Junction 11 of the M4, allowing easy access to and from Heathrow and Central London.

A dedicated Green Wave bus service links Green Park with Reading station. Services run every 10 minutes at peak times, and also call at Mere oak's Park and Ride.

CAR JOURNEYS

From Green Park (Sat Nav: RG2 6AT)

Reading station	3.3 miles	Newbury	22.4 miles
Theale	6.6 miles	London Heathrow	27.4 miles
Hook	12.5 miles	Oxford	28.7 miles
Basingstoke	15.8 miles	Central London	42.3 miles
Maidenhead	17.1 miles		

Source: google.co.uk/maps



There's a real sense of community at Green Park – from informal meetings happening at the cafés and restaurants – to friends catching up for a coffee or a work out. Delegates can also be seen making connections at the conference centre. Kids can also have fun at the play areas and crèche.



Green Park Everything you want.





Our aim is for Green Park to feel special, somewhere people enjoy working and care about. The Green Park team have designed a full programme of sporting and social activities with a focus on building a collective community which every employee feels part of.

In a typical year there are over 500 on-park events.

Green Park 500 events every year.



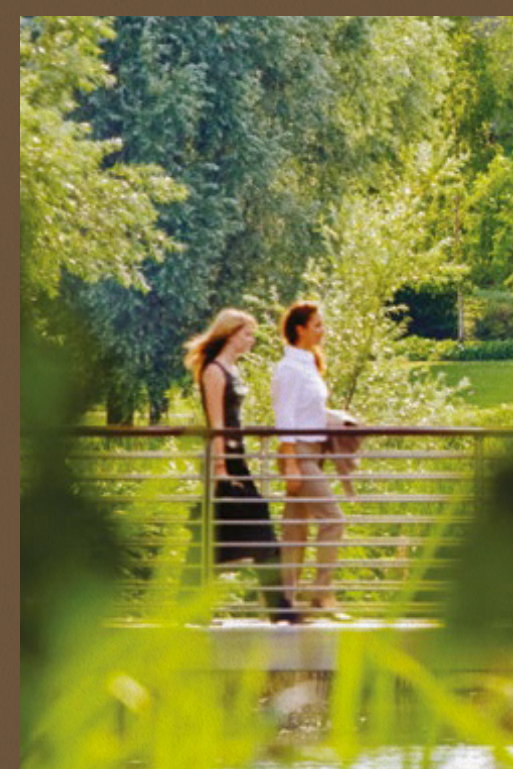


Green Park 195 acres of natural beauty.



Green Park provides the opportunity to take time for yourself from a busy day. From walking trails to picnic sites, you'll easily find a space for solitude amongst the flora and fauna of the park.

At Green Park we believe that an office should be developed with the peoples' health and wellness at the centre of design and we're proud to be aligned with the principles of the International Well Building Institute™ who are leading the global movement to transform buildings and communities in ways that help people thrive.





GREENPARK.CO.UK



Charles Dady
+44 (0)7793 808 273
charles.dady@eur.cushwake.com

Henry Harrison
+44 (0)7785 222 430
henry.harrison@eur.cushwake.com

James Goodwin
+44 (0)7717 652 803
james.goodwin@cushwake.com



Duncan Campbell
+44 (0)7827 341 503
duncan@campbellgordon.co.uk

Jake Booth
+44 (0)7714 388 044
jake@campbellgordon.co.uk

Rob Marson
+44 (0)7778 467 781
rob@campbellgordon.co.uk

These particulars are not an offer or contract, nor part of one.
Any information given is entirely without responsibility.

November 2023.

Ref: 2310008 Designed by **JAMES&JAMES** | jamesjames.design





GreenPark

GREENPARK.CO.UK

maplēree